

FastMT Models + Fixtures

FMT-200

The FastMT-200x model captures the entire ferrule while in one image, allowing users to view all fibers in LIVE mode prior to processing. Inspection speeds are slightly faster as a result.

FMT-400

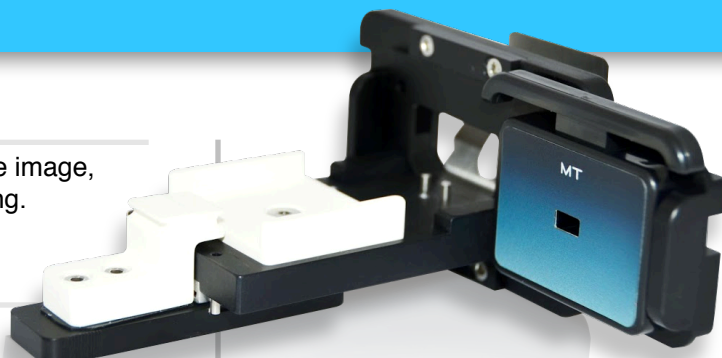
The FastMT-400x model captures the ferrule in three separate images. The high-resolution optics allow for the most stringent test criteria. The software processes captured fibers in parallel as the camera is imaging the remaining fibers.

FMT-080

The FastMT-80x provides a lower magnification model for lens-based inspection for connectors such as the PRIZM®-MT.

Fixtures

Item	Fixture Description
FXT-FMT-001	MT-UPC
FXT-FMT-002	MT-APC
FXT-FMT-003	MTP-UPC
FXT-FMT-004	MTP-APC
FXT-FMT-008	Topaz
FXT-FMT-010	LC Simplex/Duplex
FXT-FMT-011	SC Simplex/Duplex
FXT-FMT-012	IP-MPO, Male
FXT-FMT-013	IP-MPO, Female
FXT-FMT-015	Calibration Kit
FXT-FMT-016	Threaded Circular
FXT-FMT-014	CPAK/QSFP-APC, w/ connector
FXT-FMT-019	CPAK/QSFP-UPC, w/ connector
FXT-FMT-020	CPAK/QSFP-UPC
FXT-FMT-021	CPAK/QSFP-APC
FXT-FMT-024	PRIZM®-LT
FXT-FMT-025	Dual ODC-APC Plug + Extension
FXT-FMT-26	Dual ODC-UPC Plug + Extension
FXT-FMT-27	MXC Plug
FXT-FMT-28	MXC Receptacle



The long working-distance of a FastMT provides inspection of transceiver connectors without the need of inserting a probe into the bulkhead. The slide at the back moves the foot up and out of the way during inspection.



Most FastMT fixtures feature a zero insertion force toggle at the top, pressed using either the left or right hand. Once the toggle is released, a spring mechanism holds the connector snugly in place, providing stability for clear, in-focus imaging of the ferrule and fibers.

Don't see your connector?

Not a problem! Contact us to discuss your specific needs. We are happy to help develop a customized fixture just for you!

Request a quote today!

Contact us at sales@fiberqa.com

*PRIZM is a registered trademark of USCONEC